

OFFSITE CONSTRUCTION OF NEW HOMES

1ST MAY 2019 - 30TH APRIL 2023

NH2 FRAMEWORK GUIDE





SCOTTISH PROCUREMENT ALLIANCE (SPA),

a collaborative approach for procurement in Scotland, was created both by and for organisations that purchase products and services for the construction, refurbishment and maintenance of social housing and public buildings throughout Scotland.

SPA work closely with our partners, ensuring their needs, standards and aspirations are fully met. SPA is **FREE TO JOIN**, we currently have over 90 partners across the Scottish public sector. SPA is backed by **LHC** one of the leading and most respected procurement organisations in the UK.

SPA provides a **QUICK AND EASY** route to market, whilst ensuring our clients are complying with the Procurement Regulations in Scotland.

We recognise that procurement is an ever changing landscape, therefore to ensure ongoing compliance to the regulations, SPA continually monitor and update our processes to reflect any changes.

By working closely with our partners, SPA promotes best practice in procurement, helping to achieve social value and positive outcomes for communities across Scotland.



LEFT TO RIGHT

> Karen Campbell > **Lynsay Logan** > Sandra Martin > **Reiss Stewart** > Lesley Anderson > **Alistair Rankine**
> Kate Christie > **Daniella Bryans** > Katlyn Shade > **Heather O'Donnell** > Angela Banner > **John McCollum**

SPA IS MADE UP OF
**A UNIQUE TEAM OF
DEDICATED EXPERTS**
IN THEIR FIELD

GET IN TOUCH WITH THE TEAM:

☎ 01506 894 395

🌐 www.scottishprocurement.scot

✉ info@scottishprocurement.scot

🐦 @ScottishProcure

in™ [spa-scottish-procurement-alliance](https://www.linkedin.com/company/spa-scottish-procurement-alliance)

ABOUT THIS FRAMEWORK

PIN 2018-OJS 071-156374
CN 2018-OJS 164-373740
CAN 2019-OJS 104-251028

SPA APPROVED APPOINTED COMPANIES

SPA's framework for Off-site Construction of New Homes (NH2) is for the delivery of housing, apartments, multi-occupancy buildings including care homes, sheltered accommodation and student accommodation.

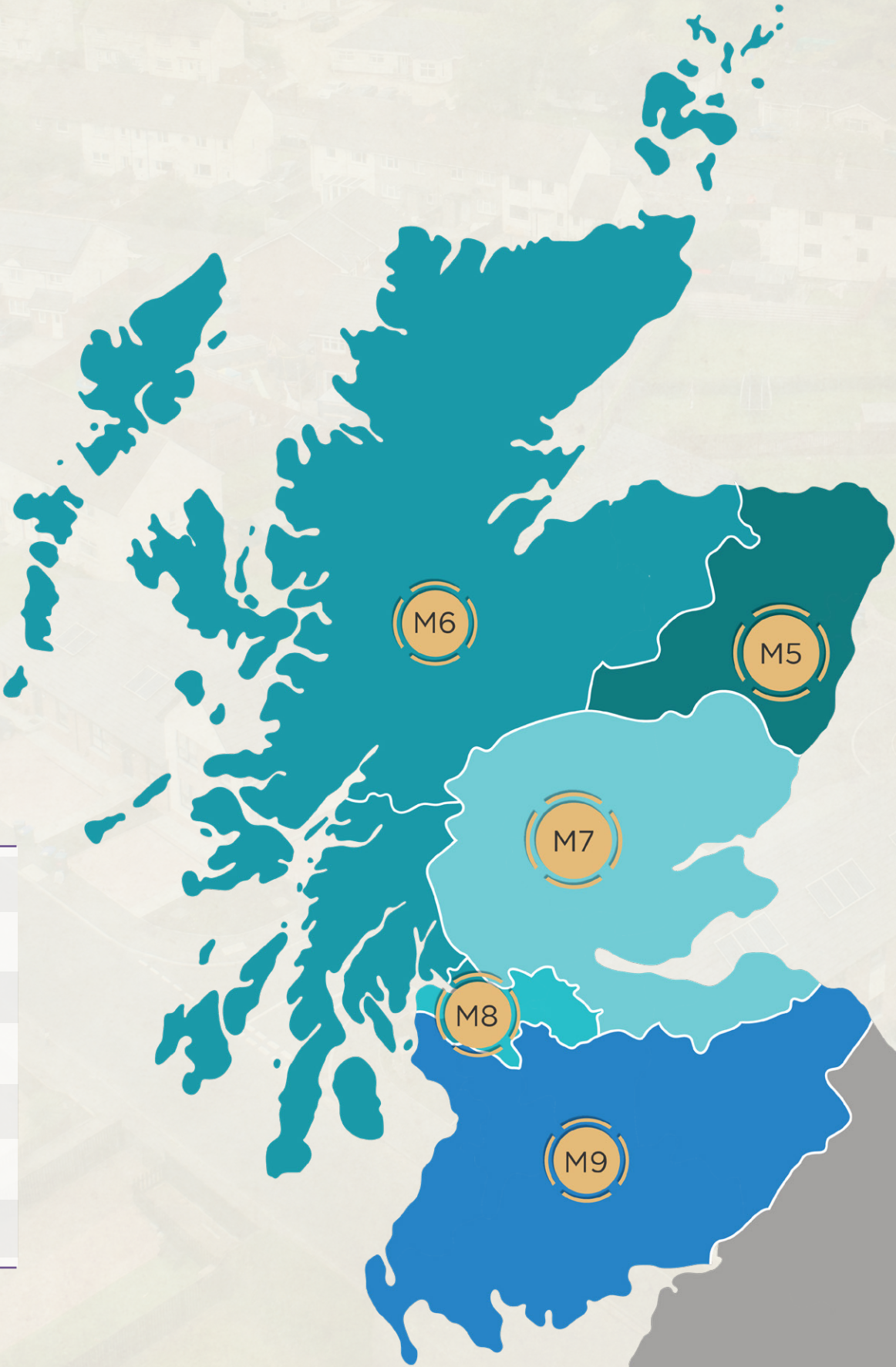
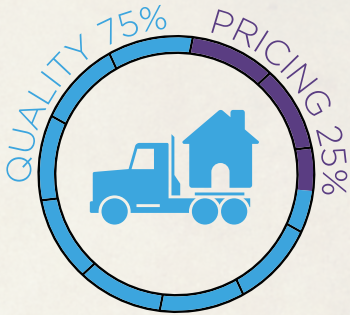
Where a project is a mixed development of residential and commercial buildings or schools and community buildings, the framework may also be used to deliver the non-residential element.

Fully OJEU compliant, it provides local authorities, housing associations and other social landlords with easy access to off-site manufactured volumetric, panelised, highrise and turnkey building systems for the use in new home build projects.

This framework is split into four workstreams with options to provide services under each workstream. All workstreams operate independently of one another.



- WORKSTREAM 1 Volumetric building systems
- WORKSTREAM 2 Panelised building systems
- WORKSTREAM 3 Highrise systems - enhanced
- WORKSTREAM 4 Turnkey delivery of offsite systems.



APPOINTED COMPANIES*		M5	M6	M7	M8	M9
	> CCG	✓	✓	✓	✓	✓
	> Hadden Group			✓	✓	✓
	> Ilke Homes	✓	✓	✓	✓	✓
	> ISO Spaces	✓	✓	✓	✓	✓
	> Module AR	✓		✓	✓	✓
	> Zed Pods	✓			✓	✓

*LISTED ALPHABETICALLY

APPOINTED COMPANY WORKSTREAMS

APPOINTED COMPANIES	OPTIONS																OPTIONS																ENHANCED ENERGY PERFORMANCE
	HOUSING				APARTMENTS				ADAPTIVE PODS				ROOM ON ROOF				TEMPORARY ACCOMMODATION				MIXED DEVELOPMENTS WITH A COMMUNITY BUILDING REQUIREMENT/ WITH ONSITE CONSTRUCTION												
	WS	1	2	3	4	1	2	3	4	1	2	3	4	1	2	3	4	1	2	3	4	1	2	3	4	1	2	3	4				
> CCG			✓		✓		✓	✓	✓																			✓					
> Hadden Group					✓				✓																								
> Ilke Homes		✓				✓																				✓							
> ISO Spaces						✓								✓			✓																
> Module AR		✓			✓	✓			✓				✓				✓									✓			✓				
> Zed Pods		✓			✓	✓			✓				✓				✓									✓							

WORKSTREAM 1

Volumetric building systems are factory produced three-dimensional units that are transported to site for fixing together.

WORKSTREAM 2

Panelised building systems are factory produced flat panel units that are transported to site for assembly.

Options Available:	OPEN PANEL	INSULATED PANELS	CLADDING AND WINDOWS FITTED	ENHANCED ENERGY EFFICIENCY
> CCG (Scotland)	✓	✓	✓	✓

WORKSTREAM 3

Highrise systems - enhanced.

Options Available:	LOW RISE	7.4-18M	18-60M	ENHANCED ENERGY EFFICIENCY
> CCG (Scotland)	✓	✓	✓	✓

WORKSTREAM 4

Turnkey delivery of offsite systems.

BENEFITS OF USING SPA FRAMEWORK



INTELLIGENT PROCUREMENT

Sharing knowledge across the sector with our clients and companies ensures that we are ahead of the curve in procurement.

The NH2 framework offers offsite construction housing solutions for use within the public sector.

The framework offers an efficient procurement process allowing clients the opportunity to procure their offsite new build development through a single source contract. Along with the design and customer service elements the framework offers high quality products whilst ensuring value for money.



FREE TO USE

Joining SPA is free for any organisation that is publically or partially publically funded.

You can download a membership form from our website:
www.scottishprocurement.scot/24

WHO CAN USE THE FRAMEWORK?

This is not a definitive list of potential users.

- > Registered social landlords (RSL)
- > Tenant Management Organisations (TMO)
- > Arm's Length Management Organisations (ALMO)
- > Local Authorities and any subsidiaries and joint-venture vehicles of said Local Authorities
- > Health Authorities, Councils, Boards and Trusts
- > Publicly Funded Schools
- > Universities and Further Education Establishments
- > Colleges
- > Police Forces
- > Fire and Rescue services
- > Registered Charities
- > Transport for Scotland

Please contact SPA for a full list of eligible organisations

50+

BACKED BY 50 YEARS OF EXPERIENCE

With a heritage that extends half a century, LHC is one of the most experienced and respected providers of procurement frameworks in the construction sector.

As a not-for-profit organisation, LHC shares an ethos with their clients. The expert technical team at LHC produce, house and manage the frameworks in conjunction with SPA and their partners.

This provides direct access to a tried and tested system that maintains compliance, quality and best value for clients.



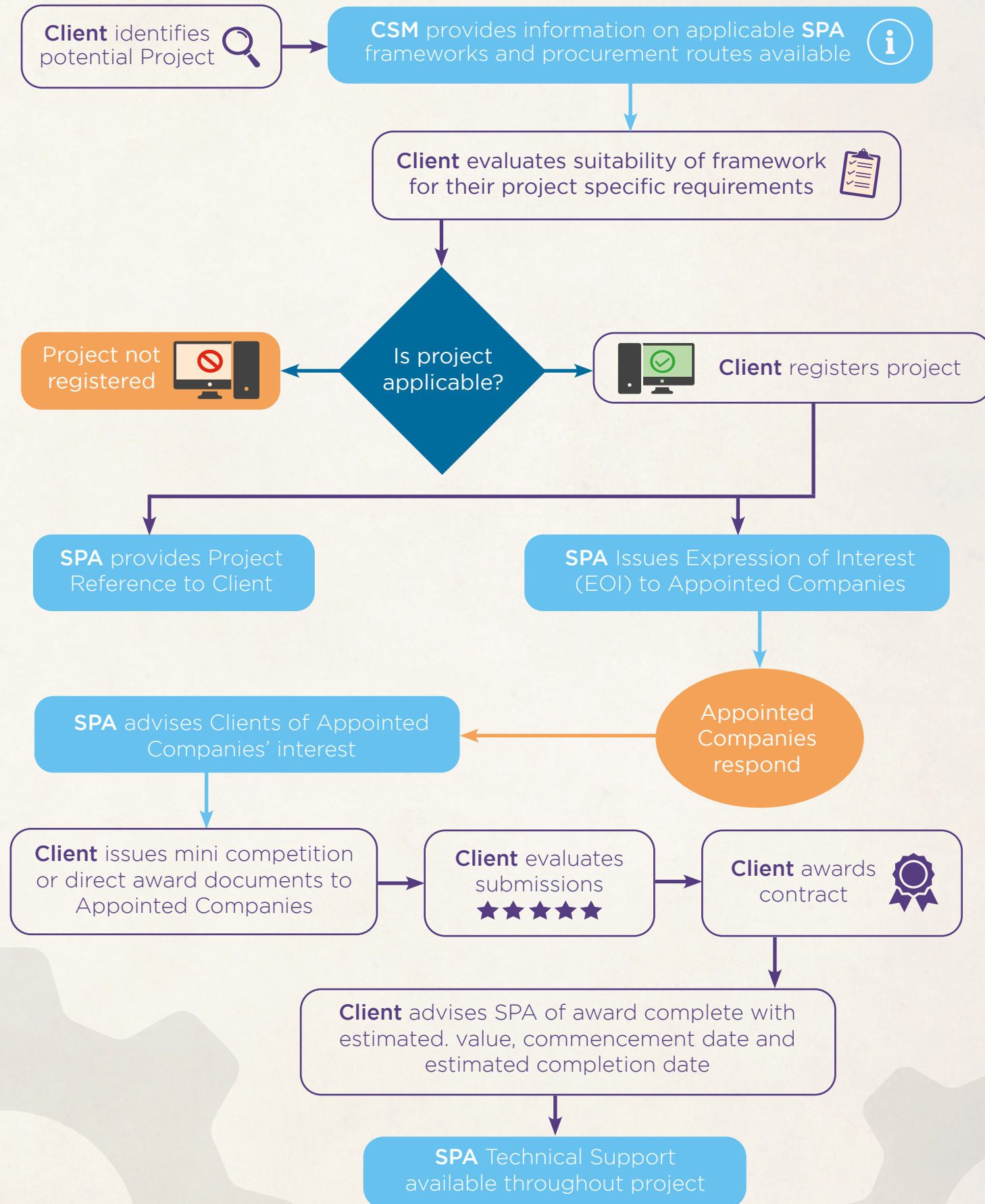
ACTIVE PARTNERSHIPS

Our partners are encouraged to engage in the development of our Frameworks.

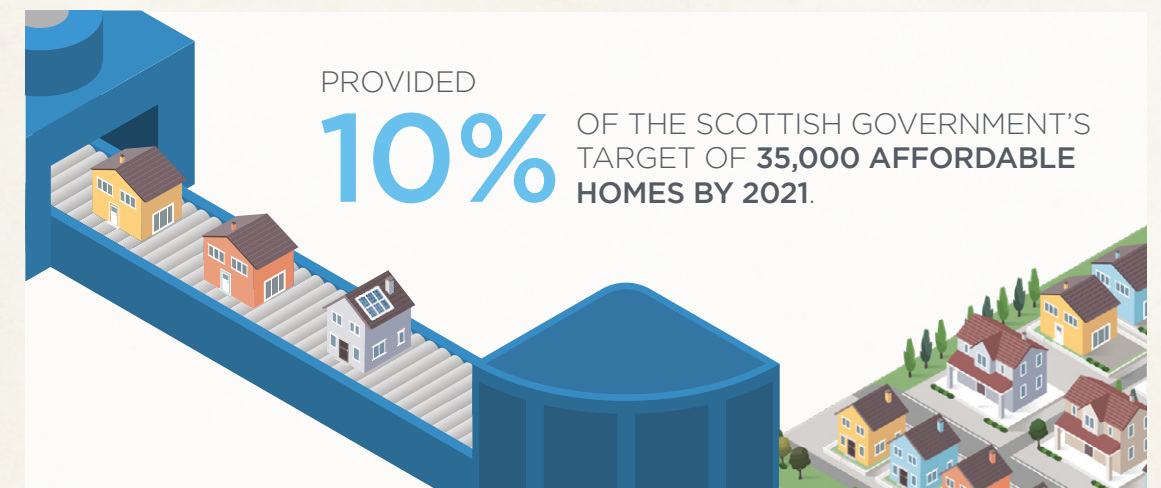
Through this, our partners, can ensure the requirements and specifications meet the needs of the local communities whilst maintaining quality standards and best value for money.



THE PROCESS OF USING OUR FRAMEWORK



PREVIOUS SUCCESS OF NH1 FRAMEWORK





01506 894 395



www.scottishprocurement.scot



info@scottishprocurement.scot



[@ScottishProcure](https://twitter.com/ScottishProcure)



[spa-scottish-procurement-alliance](https://www.linkedin.com/company/spa-scottish-procurement-alliance)

In association with



Trusted procurement for
better buildings and homes